

## **EXPLORE HAVERHILL**

Dive into summer's cool waters or learn to sail at Lake Saltonstall. Hike trails along the Merrimack River on a crisp fall day as nature dazzles you with red, orange, and yellow leaves against a clear blue New England sky. Schuss down the slopes on skis or snowboard under the bright winter sun at a the local Bradford ski area.

Eight lakes and ponds attract fishermen during the warm months and become playgrounds for figure skaters and hockey players in the winter. Joggers and horseback riders explore miles of beautiful trails at Winnekenni Basin and Recreational Area. Haverhill's strong sense of community spirit is clearly heard from the spectators at baseball, softball, soccer and football games played on the many well-manicured fields across the city.

And community groups show their pride in Haverhill's by adopting parks, promoting public arts, and restoring playgrounds through out the community. Move indoors and you'll see people from throughout Greater Haverhill working out at the various health and fitness athletic centers. perfecting "figure eights" at the roller and ice skating rinks or enjoying a championship game of bowling.

### **“Dine Haverhill”**

The Restaurant district located in downtown Haverhill has over 22 restaurants in a block radius. Mexican, Indian, Greek, Middle Eastern, Italian, and Asian businesses flourish here. You might be surprised at the diversity of shops, delicatessens, bakeries,

restaurants, and markets. This district is conveniently located just steps from the MBTA train station. Listed below are a sampling of the tastes you may encounter.



**Keon's 105 Bistro** was chosen as RAMAE's (Retailers Association of Massachusetts Awards of Excellence) "Restaurant of the Year" for 2008. Over 2000 nomination forms went out across the Commonwealth to narrow the field of this prestigious award. The winner is ultimately chosen through anonymous dining by the board members. Boisvert is no stranger to awards having won a Silver medal in the Boston Food Show, a First Place finish in a Dallas food competition, and Third Place overall in a Iron Chef style cook-off while attending the *Culinary Institute of America* in Hyde Park, NY. He has appeared on several television cooking shows and co-hosted WCCM's "Here's Cooking at You" in the early 1990's.

**England's MicroCreamery** has earned the reputation as the best place to get freshly made ice cream in the Merrimac Valley. At England's MicroCreamery we make all of our ice cream right here on the premises in full view of you the customer

**The Tap and the Haverhill Brewing Company** opened at 100 Washington Street, located in the fondly-remembered Tap Restaurant whose back deck overlooks the Merrimack River joins over thirty Massachusetts breweries, and Haverhill can once again lay claim to its brewing legacy.

**Krueger's Flatbread** known for their flatbread pizza's offers the highest quality woodfired specialty foods with quality service in a clean, relaxed, and friendly atmosphere.

**Olivia's** Italian restaurant offers excellent ambiance, portions, presentation, and taste.

**The Peddler's Daughter** is not only Haverhill's best place to grab a refreshing pint, it's a place for quality fine Irish and American meals.

**Bistro 45**, located in the bustling arts and restaurant district in downtown Haverhill offers exquisite fine dining meals that accompany a wide variety of tastes, and superb ambience to complement any occasion.

**Wang's Table** offers a full menu of sushi, sashimi, maki, and even traditional chinese food offerings

Wang's will tantalize you with a list of hot and cold sakes, sake mixed drinks, traditional mixed drinks, beers (Japanese and American), wines, scorpion bowls and of course, soda for the kids. They also serve fried cheesecake and a to-die-for chocolate mousse cake. While the food, drink, and decor will all dazzle you, the company you'll keep at Wang's will warm your heart

**Royal India** at 42 Merrimack Street serves a variety of Indian and Himalayan dishes They also offer a diverse lunch buffet (\$7.95) which includes both Indian and Himalayan dishes. Buffet is offered Mon- Sat 11-3:00

**Maria's Restaurant** was established in 1989 by the Zefra family offering sumptuous fine Italian and Mediterian fare in a friendly, family atmosphere.e.

## " Hike Haverhill"

Haverhill has created a hiking trails network, not only along the Merrimack River, but throughout the 36 square miles of woods, fields and shores of Haverhill



Many popular trails are :

- **The Clement Farm Trails** is situated on a beautiful **53-acre** parcel of land bordering Plaistow, NH,
- **Crystal Gorge Conservation Area** is located on Haverhill's western border between Crystal Street and the Atkinson, N.H. town line. The entire area comprises 65.5 acres of hilly and somewhat rocky woodlands.
- **Crystal Point Conservation Area** is a 10 acre, City-owned parcel of land that is managed by the Conservation Department and Haverhill Trails Committee for the enjoyment of passive recreation. This land has been designated as a conservation area for a variety of benefits that include watershed protection, wildlife habitat, and passive recreation.
- **Winnekenni Park** (the name comes from the Algonquin dialect, which means "very beautiful") is a hilly, city-owned conservation area of **more than 700 acres**. Upon entering the Park, you will see the Basin and Kenoza Lake behind it. These two bodies of water make up approximately half of the Park area. Plug Pond is situated in the southwest part of the park, and **Winnekenni Castle** is somewhat in between Kenoza Lake and Plug Pond. It is within a few miles of downtown Haverhill and includes about 10 miles of fairly easy walking trails. It has been a favorite recreation spot, dating as far back as the early 1800's, even though it was privately owned at that time. In the late 1800's it became Haverhill's **first Public Park**

There is a map of the Winnekenni walking trails posted on the building, near the tennis courts, at the entrance to the Park. Hiking, jogging, and cross-country skiing are popular activities on the trails. Please stay on marked trails.

- **Castle Trail:** The main road is Castle Road, which is what you are driving on when you enter the Park. It continues up the hill to Winnekenni Castle. You can drive on this as far as the Castle (3/5 mile), where it now becomes Castle Trail. There is no parking on Castle Road. From this point, Castle Trail leads down towards the Lake and joins Dudley Porter Trail (2/5 mile).
- **Dudley Porter Trail** begins on the running track at the Basin and continues along the shore. It leads around Kenoza Lake, and ends on Kenoza Street, across from Northern Essex Community College (NECC) (2 ½ miles).
- **Shore Trail** branches off the Dudley Porter Trail (after 1 ½ miles on Dudley Porter), and continues north along the Lake where it joins the Dudley Porter Trail at NECC (4/5 mile).
- **Plug Pond Trail** begins at Castle Parking Area, and heads south to the popular recreation area (2/5 mile). The Merrill Trail begins along Kenoza Street by NECC and continues ½ mile to the back of the Merrill House site.

### **Tattersall Farm**

Tattersall Farm is a beautiful property located at 542 North Broadway which is owned by the City of Haverhill and managed by the Tattersall Farm Charitable Foundation Trust. The land was given to the City by Mary Alice Tattersall who died in 1999. The 150-acre

farm was given with the stipulation that the Trustees conserve and preserve the Farm as close to its original state as possible. The Farm offers 19th century plantings, working hayfields, rolling meadows and wooded paths used for walking, birding, snow shoeing, and cross country skiing

. “Tattersall Farm Day” on Sunday, September 21, 2008, from noon to 5:00 p.m  
“Tattersall Farm Day” will be a New England style cultural and educational event for people of all ages from Haverhill and surrounding communities. Activities will include nature walks, beekeeping, wine making, animal and farming demonstrations, storytelling, hot air balloon and much more! Live entertainment will be provided by E.J. Ouellette and Crazy Maggy who will perform traditional New England fiddle music. Food and beverages will be available

### **Birthplace of J. G. Whittier**

In 1688, in a small pleasant valley under the shoulder of Job’s Hill, Thomas Whittier, the pioneer, built the house which was to be the Whittier family homestead. The family lived there for five generations and it was the Birthplace of the Quaker Poet and Abolitionist John Greenleaf Whittier on December 17, 1807.

The Whittier Homestead is an outstanding example of the old New England farm, located on its original site, is substantially the same as when the Poet lived there in 1807 until 1836. The homestead is the setting of his most famous and beloved poem Snow-Bound. Many settings from his poems are recognizable to those who have read them

## **"Bike Haverhill"**

Haverhill has a thirty two mile circumference that contains many back country, low traffic rural areas that contain scenic views of the Merrimack River, various waterfronts and



roads that are rolling to flat making them an ideal place to bike.

Great rural backroads, decent shoulders when needed, usually light traffic. Great for trailering the children, not too much worry of motorists... Reasonable elevation changes with fast midsection.

## **“Golf Haverhill”**

Haverhill is proud to boast it has six golf courses within the City limits. **Haverhill Country Club** is an 18 hole championship golf course, **Bradford Country Club** a favorite among area golfers since the 1950's., the course is a great choice for Merrimack

Valley residents who are looking for a fun, challenging game of golf., **Crystal Springs** is a 18-hole regulation golf course nestled in a country setting, **Northfields** a 9-hole hallmark course, **Murphy's Garrison Golf** is a 9-hole Par 3 golf course with beautifully manicured greens and fairways.

The newest is the **Renaissance Golf Club**, a private golf club centered on honoring the traditions and spirit of the game of golf. The 18-hole Brian Silva Signature golf course takes much design inspiration from the great Scottish links of the 19th century and landmark American layouts of the 1920s. Here, time-honored customs such as caddies, a junior golf program and walking traditions will be core principles of club life.

## “Paddle Haverhill”



Wooded shorelines of birch, maple, hemlock, and oak surround the scenic paddling that is found on all the ponds and lakes in Haverhill. Plug's Pond is a favorite spot for kayaking, fishing and swimming. Round Pond is another favorite for boaters, fishing, hiking, and picnics. For the more adventurous the Merrimack River runs through Haverhill and offers nice flatwater with a decent current, in high water conditions this can result in some entertaining currents.

## “Arts Haverhill “

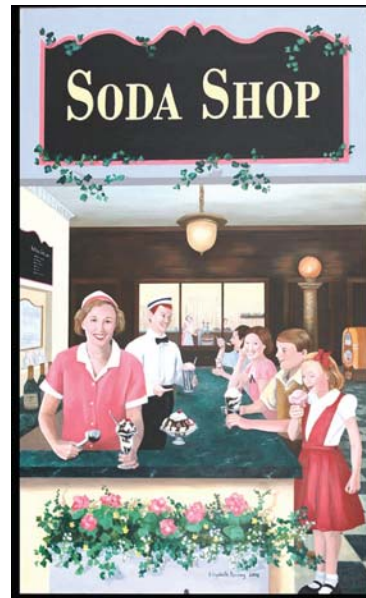
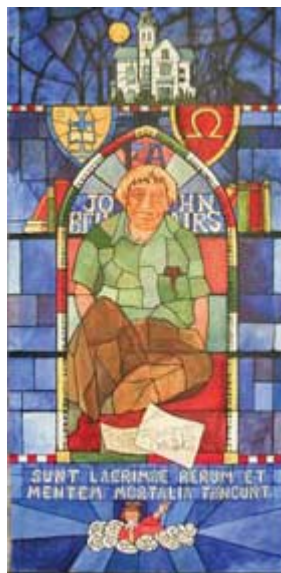
Soles of Haverhill “Shoe-la-bration is a summer-long public art installation that will feature five foot tall, vividly painted fiberglass sculptures of a high-button shoe, just like

the type of ladies footwear Haverhill was once famous for producing. Each uniquely painted shoe will tell it's own story, and the city's too, as it brings fresh color, imagination and excitement to the downtown district. The shoes will be on display from July through October when they will be sold at a large gala auction event to support local non-profits, historical, cultural, and art activities.

In 2007, Team Haverhill launched the "Haverhill Mural Project." Intended to beautify, educate and reflect Haverhill's diverse and unique heritage and culture, the Haverhill Mural Project has become a treasured part of the civic landscape and a great source of pride.

Twenty three murals feature historic scenes from Haverhill's past and are mounted on the side of historic buildings in downtown. The murals are intended to evoke those spirits of the old downtown to help grow a new heart of Haverhill, where now-defunct shoe factories are transformed into modern pubs, restaurants and shops. When you visit downtown Haverhill be sure to take the time to enjoy a Self-Guided Walking Mural Tour.

[http://www.teamhaverhill.com/pdf/Mural\\_Map.pdf](http://www.teamhaverhill.com/pdf/Mural_Map.pdf)



**Wingate Street** has become the heart of the Arts District in historic downtown Haverhill. The Wingate Street Arts District is full of arts related businesses all housed in old brick shoe mills built in the 1800's. You'll find most of these shops between Peddler's Daughter and England's Micro-Creamery. Wingate is the one-way street, just half a block from the newly renovated Haverhill train station. The arts district has become a destination not only for Merrimack Valley fans, but for arts lovers throughout Greater Boston. Once the heart of shoe manufacturing in the 1800's, today's businesses have



restored Wingate Street's old brick Queen Anne period buildings into enticing shops, studios, galleries and restaurants.

**Margot's Gallery™** is located in the Wingate Street Arts District of Haverhill Massachusetts. Housed in a 127 year old restored Queen Anne Industrial style mill building - circa 1882, the gallery provides an inviting atmosphere in which to explore the captivating folk art treasures and jewelry displayed within its historic walls. The works represented in our gallery have an international flavor and appeal with pieces ranging from the exotic and unique to the whimsical and folk inspired.

**Positive Images** was started in 1980 as a stock photography agency, representing the work of a number of photographers and marketing their work to the publishing industry. Almost thirty years later, they are still supplying photography to advertising firms, calendars, text books, trade books and greeting cards, and represent 65 photographers from all corners of the country.

**Arts and Angles Fine Art Galleries** for more an 30 years this custom frma shop helps "demystify" picture framing by guiding you through a fun and creative process that is an art in itself.